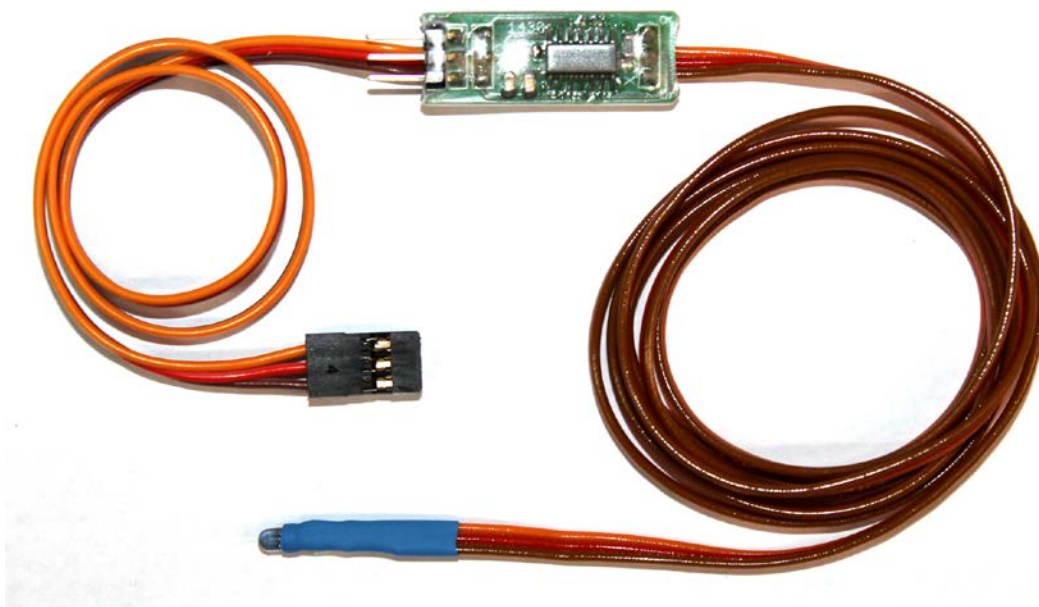


Operating Manual

Road train adapter IR-RTA



BEIER-Electronic
Winterbacher Str. 52/4, 73614 Schorndorf - Weiler
Telefon 07181/46232, Telefax 07181/45732
eMail: modellbau@beier-electronic.de
Internet: <http://www.beier-electronic.de/modellbau>



Description

With the adapter IR-RTA a road train with one towing truck and several following trailers can be realised. The signals from our modules SFR-1, USM-RC-2 or UFR-1230, to the first light module SM-IR-16-2 are passed on to the next light module in the following trailer.

Each trailer requires an extra light module SM-IR-16-2, a battery and the road train adapter IR-RTA.

The passed on light and servo functions are the same in each trailer. For example it is not possible to transmit signals of one servo output to each trailer differently.

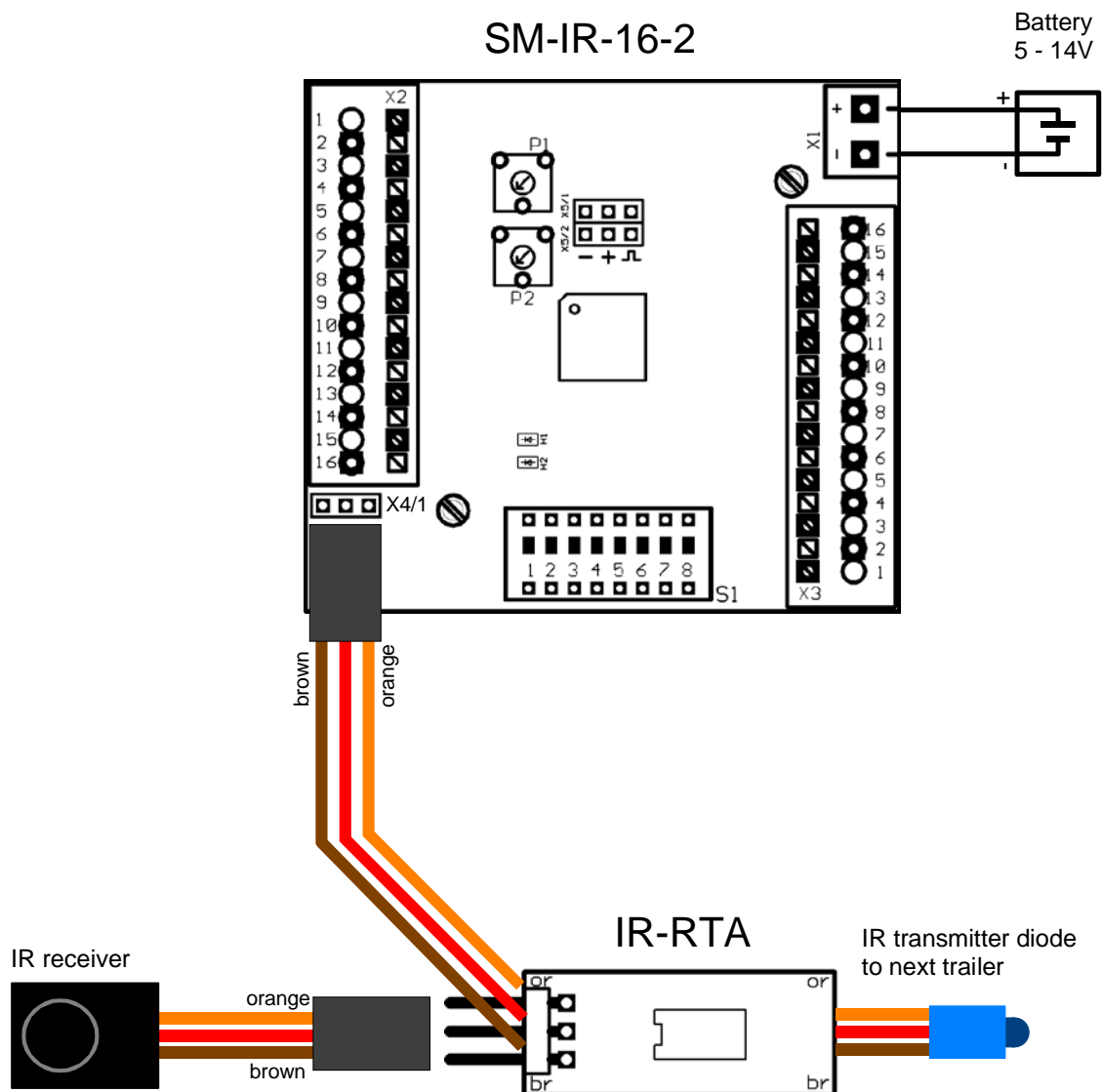
Safety notes

- Please read this operating manual carefully and keep it for future use!
- The integrated circuits on the road train adapter are sensitive to electrostatic charge. Therefore it is important not to touch these components, before discharging yourself (e.g. through a grip onto a grounded device).
- The road train adapter must only be used with supply voltages that are given in the technical data.
- Always switch off power first before connecting the module!
- The road train adapter is not suitable for children under 14 years.

Technical data

Supply voltage (U_b):	5V DC (from SM-IR-16-2)
Power consumption:	approx. 10 mA
Inputs:	1 connector for IR receiver (pluggable)
Outputs:	1 connector for SM-IR-16-2 (length of cable approx. 30 cm) 1 IR transmitter diode (length of cable approx. 100 cm)
Permissible ambient temperature:	0 – 60°C
Size:	38 x 12 x 7 mm
Weight:	14 g

Connection diagram



Connection of road train adapter

Connection of road train adapter to light module SM-IR-16-2:

Connect the black 3-pole plug (with a 30 cm cable) of the road train adapter to X4/1 on the light module. Without a road train adapter the IR receiver is directly plugged into X4/1. The brown cable points to the edge of the board, the orange to the middle.

Connection of IR receiver:

The IR receiver is plugged directly to the 3 pin header of the road train. The colours must match with the colours of the soldered cable below (same order).

Connection of IR transmitter diode:

The IR transmitter diode is already attached to the road train adapter at the end of the 100 cm cable. No further connection is required.

